



FLUIDMECCANICA

STEERING GEARS



FLUIDMECCANICA has designed and supplied steering gears since **1977**.

From the smaller systems of **1.6 kNm** to the biggest one of **1600 kNm** we keep the care of each component, to meet the quality and requirement of our customers.

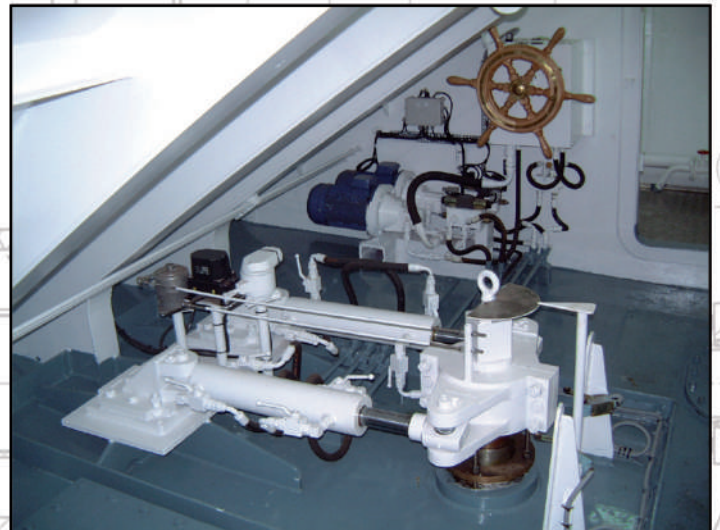
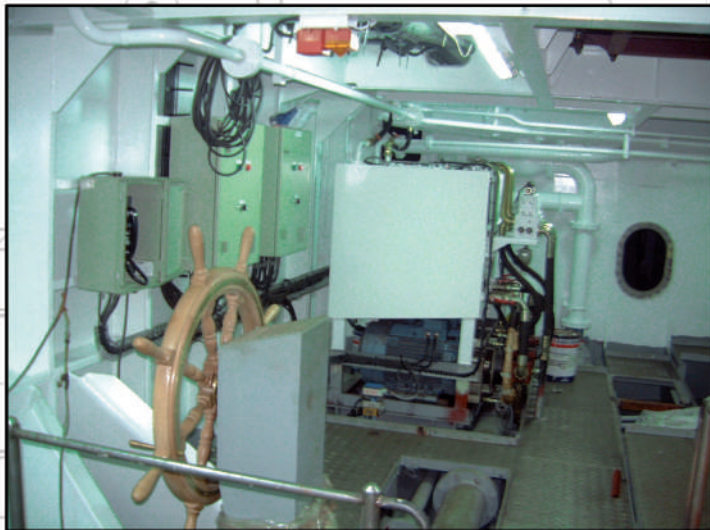
As own designers, we can develop special configurations requested by customers





FLUIDMECCANICA

STEERING GEARS



Main characteristics

Torque up to **800 kNm**

Number of tillers up to **4**

Synchronism **mechanic or electric**

Power up to **110 kW**

